

## Miniature Steins

By: Les Paul

In this issue we are featuring miniature steins that are also character beer steins. Figures #1 and #2 provide a perspective of the relative sizes for all the other pictures in this article. The three porcelain alligators in figure #1 were all made by Schierholz. As far as we know, they only made this stein in two sizes. The large alligator on the left was originally a tobacco jar that was recently made into a stein by drilling new holes in the rear of the lid and adding the pewter mounts.

The stein on the right is the common 1/2 liter Schierholz alligator marked "Musterschutz" on the base and "0.5L" on the interior rim. The miniature in the center was originally made as a stein with pewter mounts. Schierholz also made this size with a set on lid which has an edge cutout or opening made to accommodate a tiny spoon. That mustard jar and also salt and pepper shakers are much easier to find than the stein in this 3 & 1/2 inch size. I've measured the interior capacity at about 1/32 liter, but like most mini steins below 1/8 liter, they are not capacity marked.

A 1/4 liter or a 1 liter Schierholz alligator has not been seen, yet; but one never knows what rare variations in size may eventually surface. The open mouth, made by two separate porcelain pieces, is a costly detail only on the two larger items, not on the miniature alligator. The mini lid was made in a single mold. (See close up in figure 16-A)

Figure #2 shows this same miniature porcelain character stein again on the right with two 1/8 liter "pottery" or ivory colored stoneware alligator steins on the left and center. The taller stein on the left measures almost six inches because of the false bottom, hollow music box base. The same stein body without the music box base measures only 4 & 1/4 inches.

With the exception of figure 1, the largest stein in each of the illustrations for this article is 1/8-liter or smaller. Although these pictures show 48 miniature character steins, that's really not many when you consider the huge numbers of regular



figure 1



figure 2

size character steins (approximately 1,200 are known) and the untold thousands of other types of miniature steins. Most of these mini characters are Munich Maids (27) and towers (7) which were souvenirs of Munich and Nuremberg. That only leaves 14 other mini subjects.

I think their numbers are limited because the cost of producing the mini character was probably almost as much as the cost of making the regular size character stein. Most miniatures were inexpensive souvenirs or gifts to bring home to the kids. Character steins with delicate protruding parts tend to be too fragile for children to use or play with.

Figure #3 shows a 1/8 liter, 4 & 1/2 inch baby in bunting (blanket) by Schierholz on the left. The smaller ivory stoneware clown was made by Diesinger. This little guy is also usually seen with a set-on or mustard jar lid, but it can occasionally be found with original pewter mounts too. I've never seen one in full color though, which again is probably due to the need to keep the miniature's cost low.

The smaller 1/16 liter 3 & 5/8 inch clown is a rare majolica glazed earthenware stein. The maker is unknown. The 1/8 liter 5 inch Dutch girl on the right is marked with the Gerz triangle and form #1264. She holds a doll by its arm in her left hand and is also hard to find.

figure 3



figure 4



figure 5



Gerz also made the two little cats in figure #4, and marked them with the same factory triangle. They also made this stein in 1, 1/2 and 1/4 liter sizes base marked with form numbers 060, 061, and 062 respectively. The mini cat is form #030. I've only seen the "student cap to your left" version in this miniature size. In the larger versions there is a hole below the nose from left to right (figure 16-B). It was made for whiskers, which are almost never there anymore. This detail was omitted in the mini 1/16 liter, 4 inch size.

The "Prosit" bulldog in the center is base marked #1390 and was produced by Hanke. They also made a similar 1/2 liter bulldog #1400 but with a big red neck ribbon, bow and with a different verse. Most of these miniature character steins are exactly like larger versions in the normal (1/4 to 1 liter) sized steins. There is a 1/2 liter version of the center stoneware alligator in figure #2, also made by Marzi & Remy (form #1797) but we haven't seen a larger one with the music box base yet. Only a few of the minis pictured have no larger versions that we know of. In figure #3 there are two larger sizes of the baby on the left: 1/4 and 1/2 liter size versions; but the two clowns and the Dutch girl are unknown in any other size.

The three Munich Maids in figure #5 are 1/8, 1/16 and 1/32 liter sizes. Remember, the largest stein in any of the photos except figure #1 is only 1/8 liter. This most common character stein was also made in 1/4, 1/2, and 1 liter sizes. They were all distributed and base marked J. Reinemann. Notice that the smallest 3 & 3/4 inches 1/32 liter mini differs from the rest with no ring of dots in relief near the base and was made cheaper without a pewter lid ring.

Figure #6 pictures a 1/16 liter (left) and a 1/8 liter (center) Munich Maid mini stein that are very similar to the more common Reinemanns. The molds are extremely similar, differing only by omitting the ring of dots at the base. But as you can see, these mini Munich Maids are paint decorated very differently.

They also come in larger sizes, as does the chubby Munich Child on the right. In fact there are larger, or "normal" sizes of all the Munich Maids pictured except the two pewter steins in figure #12. There is a 1/2 liter all pewter Munich Maid but it's completely different.



Figure #7 shows three porcelain versions of the same or similar mold. The 1/8 liter stein on the left is bulbous, has no pewter lid ring, includes the term "Gruss aus" on the HB stein, and does not have the ring of dots on the base. It is a different, but otherwise similar, mold.

The next two porcelain steins are just like the previous stoneware J. Reinemanns, including the ring of protruding dots at the base. You can't see them in the big photo since they are not paint detailed, but they are there (see figure 16-C). The smallest Munich Child in the center left measures only 3 & 1/2 inches short.

The porcelain stein with the pretzel on the right was distributed by Jos. Mayer in Munich. This is the 1/32 liter size. I don't have the 1/8 liter yet to show you, but I'm sure she is out there somewhere.

Figure #8 is a mixture of three 1/8 liters: first a porcelain, then two stoneware Munich Maids. I don't know who made the first two but the fat girl on the right is base marked by Gebruder of Nuremberg.

The stein in the center of figure #9 is a small corpulent version of the most beautiful of all Munich Maid character steins. It was distributed by Martin Pauson in Munich and both this miniature and the 1/2 liter version have a hole in the top of the child's left hand (see figure 16-D). Originally a small piece of jute, representing the end root of the radish, was glued in this hole. I've only seen the original jute still intact twice, and only in the fairly common 1/2 liter version of this stein.

The other two steins in figure #9 are later copies of the E. Bohne Munich Maids. The black version is much harder to find. The inside of the hood is not always painted yellow, but it sets off her doll face better when this detail is added.

The center Munich Maid keg in figure #10 was made by E. Bohne. The other two are Schierholz. All three kegs also come in two or three larger sizes.

In figure #11 the 1/8 liter mini on the left is stoneware and measures 5 & 3/4 inches. The two center porcelain steins share the same lid but the stein in the center right has a much shorter (dwarf) body. The tiny porcelain version of this stein on the far right measures only 2 & 3/4 inches. Other than a monk charm, it's the smallest character stein that I've seen.





figure 9



figure 10



figure 11



The stein on the left in figure #12 looks big, but again, is only 1/8 liter. There are six sizes of this stein, usually marked by their Munich distributor, Jos. Mayer. The smallest pewter stein on the right only measures 3 & 1/8 inches short.

Figure #13 starts off with a Hanke 4 & 3/4 inch 1/8 liter pig on the left. Its base marked #1391. Hanke also made a similar 1/2 liter pig base marked form #1260 but with a different verse.

The skull on the center left is a bit unusual. It measures 3 inches to the top of the lid and has the molded #1359 "impressed" below the bones handle. A 1/4 liter version of this same skull stein is numbered 1747. The skull on the center right is exactly like it's larger versions made by E. Bohne of Rudolstadt, including the distinctive handle. It even has the "1/16L" capacity mark on the exterior rim, and measures only 2 & 1/2 inches to the top of the lid (see figure 16-E).

The pewter trichter (funnel) is a souvenir of Nürnberg. The scene in molded relief depicts two adults (maybe parents or teachers) using a funnel to pour or fill the child's head with knowledge (see figure 16-F). An excellent article by Frank Love explains how the trichter became synonymous with the city of Nürnberg (see Prosit #31 August 1973, page 184). It's 3 & 5/8 inches tall and has a 1/16 liter capacity. There is no known similar larger version of this mini pewter character stein.

Figure #14 starts with a 5 inch 1/8 liter H.R. Frauenkirche tower. It's the only Munich mini tower I have. The other six towers are all souvenirs of Nürnberg. There is also a taller 6 inch 1/4 liter H.R. tower that uses the exact same lid. Don't confuse these smaller towers with the more common 1/2 liter and 1 liter Frauenkirche towers marked T.W. If yours are not marked, the easiest way to tell the two makers apart is the smaller H.R.'s clocks are at 2 o'clock and the larger T.W.'s are at 3 o'clock (see figure 16-G & H).

The center stein in figure #14 has two other versions not pictured. All three have the same ceramic lid measuring 5 & 5/8 inches tall and are 1/8 liters. The pictured version includes a ribbon commemorating the, "27-31 Juli Nürnberg 1912 VIII Deutsches Sängerbundesfest." It is a nice souvenir of the singing event. The second version of this stein does not



include that event ribbon, and the third version completely omits the side circles of Hans Sach and a city scene on the other side.

Figure #15 starts with a thin 5 inch ivory colored 1/16 liter stoneware tower on the left. Next to that is a fatter or wider cobalt blue 1/8 liter salt glaze stoneware tower. The smallest pewter, miniature, tower character stein in figure #15 on the right measures only 3 & 1/2 inches to the tip of the finial flag. The capacity is too small to measure as a fraction of a liter.



figure 12



figure 13



figure 14

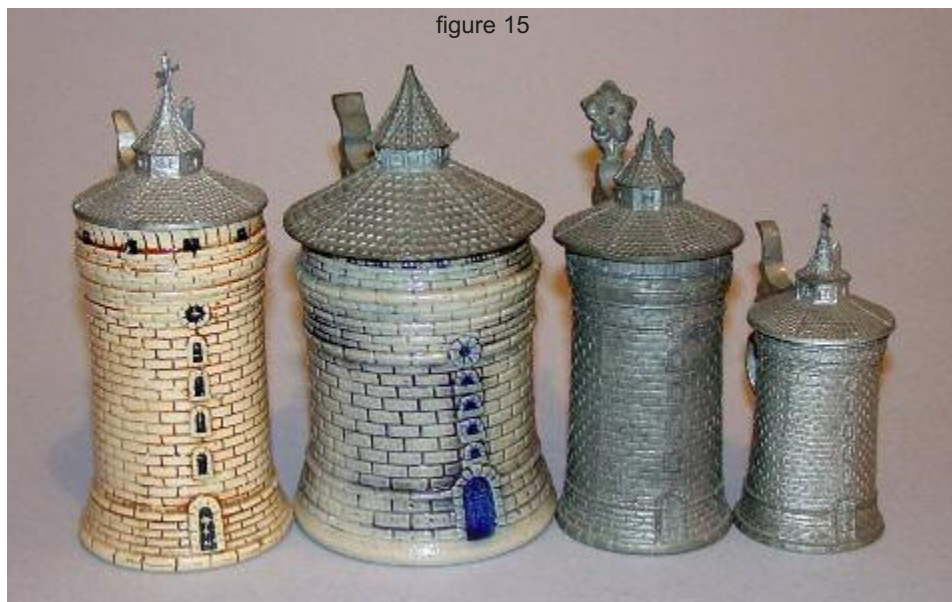


figure 15



16-B



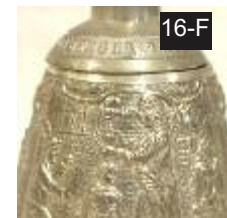
16-C



16-E



16-D



16-F



16-A



16-G



16-H

If you know of any other miniature character steins not pictured, please inform this author. As you may know, I collect both character steins (1,050) and miniature steins (1,300 so far); so when I hear about another miniature character stein, I'm twice as excited to learn about it.