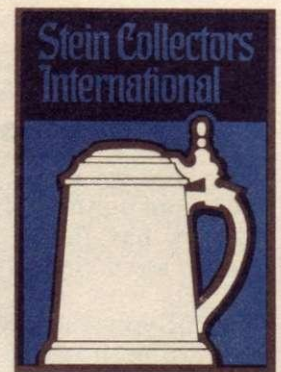


# Prosit



## Annual Convention June 21-23 in San Antonio

The big event is nearing. At this writing 80 of our members have signed up to meet in San Antonio, Texas, for our 7th annual convention. Fredlien Schroeder and his group have planned a fascinating and fun filled 3 days in the home of the Alamo. Billed as "one of America's four unique cities", San Antonio promises to be a colorful and interesting backdrop to the many activities Fredlien has planned for us. Here is a brief rundown of the convention schedule:

6/20 Arrival at La Mansion — Registration all day. Informal organizers get together

6/21 8:00 am-Registration

9:00-10:30-Formal Organizers Meeting

10:30-Welcome by C of C Representatives

10:45-12:00 Stein selling and trading by members.

Discussion forums.

Lunch-Dutch Treat

3:30-Paseo Del Rio Boat Ride

5:30-Busses leave from La Mansion to Lone Star Brewing Co.

Following events at Lone Star Brewing Co.: Tour of Hall of Horns, Hall of Steers, Hall of Fish, Buffet (Mexican Food) Mennecohr Singers and program.

6/22 Breakfast on your own

8:15-10:00 am — General Meeting

10:00-11:45 — Stein selling and trading by members

12:00 - Walk to St Anthony Hotel for luncheon and style show

2:30 — Busses from La Mansion for Schroeders home in Seguin

7:00 Riverboat at La Mansion to Tower of Americas

7:30 Tower of Americas for dinner. Return by river walk.

6/23 Breakfast on your own

8:30-9:30 am - General Meeting

9:30-12:00 - Stein selling, and trading by members

12:00 — Stroll on river walk to Stockman's Restaurant

12:15-1:30 pm - Lunch at Stockman's

2:00 — Busses from La Mansion

return at 4:00 pm for Mission Tour (Optional)

7:00-8:00 - Cocktails - La Mansion Private Club

8:00-9:00 — Farewell Dinner — La Mansion

6/24 Breakfast on your own and fond farewells?

If you have not responded to the call of the convention, there is still time. At this late date, we suggest you call rather than write convention headquarters, La Mansion Motor Hotel, San Antonio, regarding room reservations. Convention costs, excluding room, are \$65.00 per person. A \$20.00 deposit is requested. After June 11, send this deposit and notice of your coming directly to: Fredlein Schroeder, P. O. Drawer 1048, Seguin, Texas 78155.

Remember, membership in SCI is a prerequisite for attending the convention, so if you have not sent in your 1973 dues, due (pun) so immediately!

It promises to be an exciting and worthwhile 3 days. It may also be profitable, as there will be much stein selling and trading. So plan to bring any steins you wish to sell or trade. See you in San Antonio!

Don't forget

"Normal" people carry pictures of children and grandchildren, eagerly awaiting the opportunity to show them off.

Stein collectors feel that way about their steins. If you are proud of your collection, you'll have an interested audience for your photos.

Those coming to the convention, please remember to bring slides, photos and albums of your steins to show and discuss with your SCI-ers.

## Prosit moves north

Well, here we are at last. The first issue from our new Minnesota headquarters has finally reached you. Hastily assembled as it is, we hope it meets with your approval. For those of you who have lost track of what issue it really is — this is actually the fourth issue due to you on your 1972 dues, or what in effect would have been the December, 1972 issue.

From now on, as the saying goes, it's a new ball game. Those who responded (thank you) to our recent letters regarding this year's (1973) dues, we are promising 4 issues of Prosit between now and 1974. Since it has taken until June to get the legal business straightened out for the takeover, we have set a tight schedule for ourselves to accomplish in six months what would normally be done in twelve.

However, by sending us your twenty dollar dues you have indicated a confidence in us to produce a worthwhile and needed publication and we feel an obligation to give our best effort.

At this writing many of you have paid dues. We hope many more of you will decide to join us in our continuing adventure. We need your support. Please send your twenty dollar dues, plus your name and address to:

SCI  
P.O. Box 4226  
St. Paul, Minnesota 55116

For those of you who have decided not to participate, we will miss you. This then, will be the last issue of Prosit mailed to you. If you change your mind and reconsider, we will welcome you warmly. Just write to the above address. *Auf Wiedersehen!*



## Auctions ... yes

We *will* have stein auctions, bigger and better than ever. See our next PROSIT for details.

## Help!!!!

As avid stein collectors, we know how eagerly you search for new and interesting information on our fascinating hobby. We want Prosit to be the source of such valued data, but to do it we need your help. All of you knowledgeable collectors, curious explorers — *please*, SEND US ARTICLES YOU HAVE WRITTEN, PHOTOS WITH GOOD DESCRIPTIONS, NEWSPAPER OR MAGAZINE ARTICLES YOU HAVE SEEN, STORIES ABOUT INTERESTING RESTAURANTS, TAVERNS OR PLACES WITH STEIN COLLECTIONS. WE WANT CHAPTER NEWS. In fact we would like each SCI Chapter to elect or appoint a special Prosit reporter to keep us informed on chapter activities and to whom we can direct inquiries. Please, share your knowledge with us. We need it to make a good Prosit. As we said when we accepted the responsibility for Prosit in Minnesota last year, it is *your* publication now, member-owned and member-supported. Without your help and cooperation Prosit will not be what it could be. We're counting on you.

## Attention Regimental Collectors

For people who are interested in Imperial German Memorabilia a group has recently been formed to promote interest in these collectibles. They publish a quarterly and perhaps Regimental stein collectors would be interested. Write: Imperial German Military Ass'n., P. O. Box 651, Mission, Kansas 66201.

## DEAR EDITOR:

The space above is blank. Please fill it in the next issue with your comments, suggestions, criticisms (ouch).

## CHAPTER NEWS

Erste Gruppe (Calif. Chapter)

Meetings set for the year:

September 8, 1973 —

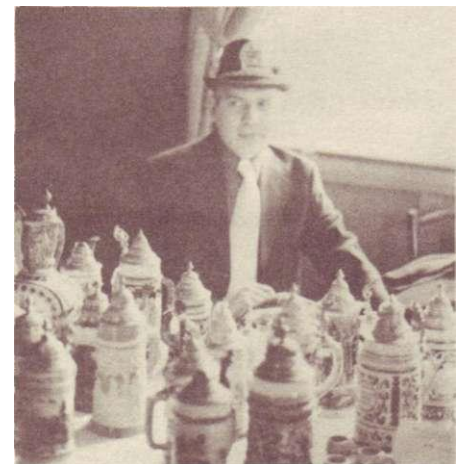
Home of Joe and Mary Durban

December 15, 1973

Home of Al and Mario Edmonds.

## Thirsty Knights stage stein sale

The busy New York chapter of SCI reports a successful stein sale in January. Marianne Gruskin said that 450 steins were available for sale. A dinner followed. Our thanks to Marianne for the photos of the event.



Warren Moffet (Buffalo, N.Y. Chapter) selling steins at the show.

## Tribute to T.M.

After assembling, editing and attending to the many details involved in soliciting members and preparing this first Minnesota-born issue of PROSIT, we begin to comprehend what a really big and time consuming job it is. We should all be grateful to Tom McClelland for his efforts over the years. We hope he will be a frequent and prolific contributor to our PROSIT.

We would hate to see his breezy style and informative articles disappear from the pages of PROSIT.

## Cloak-and-dagger security

Some collectors go to incredible lengths to guard their identity, their addresses and city. It may seem a bit cloak-and-dagger but the increase in tragic thefts of valuable and treasured collections has made even the most open and trusting of our members nervous about the safety of their steins.

The SCI membership list will not be available to anyone, even other members. However, to learn more about steins and to share what we know we must have some way for members to communicate with each other, or the whole purpose of having a club is open to question. Therefore, we are working on a system that will allow more communication while still guarding the privacy of our members.

Those of you who have paid your 1973 membership dues will soon receive a membership card and an identifying number; that will be your permanent number as long as you are a member of SCI. We will use it for our records, and in some cases it may be the only way in which a member is identified.

Now, here is how the communications system will work: Member George Jones wishes to get in touch with member Harry Smith who he met at the last convention. He would send this request in a stamped envelope with Harry Smith's name on it to SCI headquarters. We add Smith's address to the envelope and send it on to him. It is up to Mr. Smith if he wishes then to correspond directly with Mr. Jones, divulging his address and location. Or, if he prefers, he can pass his response to G. Jones back through us in the same fashion. Neither need know even the city from which the other hails, but will still be able to communicate freely about their hobby.

Sounds complicated, but it really isn't. It may take a little longer, but for many the additional safety factor will be worth it.



At casual first glance these two Mettlach pouring pitchers #2210 appear to be the same. Closer examination reveals many differences. Can you pick them out? Get out your magnifying glass and see how well you do.

#2210 (left) produced prior to 1900 had 13 figures on the solid color center band; the #2211's (right) produced after 1900 had only 12 figures and lacked many of the details present in the earlier model. Working clockwise, right to left, here are the details present in the 13-figure pitcher that are missing in the 12-figure one: (1) A tree with leaves (next to handle). (2) Board mounted on post (to right below handle) signature FUCHS of artist. (3) Post to right of innkeeper has an innkeeper sign.

(4) Table in front of two men has a beer stein and a pipe on top of it. (5) Bowling ball resting on floor between front and back leg on table. (6) Man seated backwards astride chair with chin resting on top rung of chair, 2 bowling balls at feet, dog jumping over the balls. (This is the 13th human figure missing in later reproduction). (7) Man with left hand with pointed finger in front of face has right hand across stomach rather than extended. (8) Two men, one seated on stool (next to handle, furthest left) has right leg only slightly bent.

Dimensions: 11" high (including ceramic top), 24" circumference center band. Colors: center panel available in blue, rose or green, figures and decorations are white, background is a cream color.



## Post office boxes recommended

### Post Office Boxes Recommended

Many members have found that the nominal expense of a post office box for receiving their stein-related mail is a worthwhile investment in safety. It will eliminate the possibility of their address being easily found by unfriendly or unscrupulous persons. Nothing, of course, guarantees total safety, but this is one simple and inexpensive precaution we heartily recommend. Contact your local post office for details and send us your new P.O. number for our files.

## Q & A

This will be a continuing column in our new PROSIT. Send your questions about any aspect of stein collecting. We will try to find the expert who can knowledgably answer your question, and we will share the answer with all of our readers in this column.

Q. I have a Mettlach #2530 ½ liter stein. Different people who have seen it use different names for its type. Some call it relief, wedgwood, cameo and applique. What is the correct name by which to describe this stein?

J.B.L., St. Charles, Mo.

A. See Cameo article by Jack Lowenstein in this issue of PROSIT.

Q. My collection of steins is all ceramic or stoneware types. I notice only steins made by Villeroy and Boch have white liners. Do all Villeroy and Boch steins have white liners?

C.K.S. La Porte, Ind.

A. To the best of our knowledge all V & B (makers of Mettlach steins) have white liners.

Q. Recently I purchased a mug slightly barrel shaped, cream in color, marked ½ L. at left of upper attachment point of handle to body. It has the mark "M" in a circle and name Grainbelt and Minneapolis Brewing Co. The bottom has the impressed number 2217 but no other mark — I am advised it is a Mettlach. Could you tell me?

W.L.H. Bella Vista, Ark.

A. In all probability it is a product of Villeroy & Boch of Mettlach, Germany, as this number 2217 is the catalog number of a certain mug they utilized extensively for advertising or promotional commercial use.

Q. My wife bought me an animal stein for my birthday. It is tan, beige and brown. It shows a monkey with a stein in his paw. Since acquiring it I've learned that the original stein of this type has been reproduced. How can I determine if I have an original or a reproduction?

J.R.C., Prior, Okla.

A. This piece is known as the "Drunken Monkey". The original has the word "Musterchutz" printed under glaze on the bottom, also in the original the lid of the stein the monkey is holding is wide open, almost at 90° to the body of the stein, while in the reproduction the lid is but partially open. (Editor's comment: The maker of this reproduction also reproduced other pieces.)

Q. Did the makers of Mettlach steins use the same pictures or artwork for different shapes or styles of Mettlach steins? Or do I have a "rare" pair since I have a 1526/962 and a 2178/962, each ½ L with different lids, different bodies but same scene?

Mrs. J.L.P., Tacoma, Wa.

A. Villeroy & Boch used the same artwork not only on a number of different catalog number pieces, such as #1526, 1909, 2177-2271 etc, but also on sizes of ¼ liter to 5 liters. You do not have a rarity, but it is interesting to collect the same design in all the shapes in which the design was made available.

Q. Does engraving on the top, especially around the rim or edge of the pewter lid of a stein detract from the value or make it undesirable as a collectors item?

A.Z.A. Tavares, Fla.

A. No. In fact it further authenticates the stein's age plus it has added value as an aid to both description and identification of a specific piece.

## STEIN EXCHANGE

Regimental collector seeking pottery relief regimentals marked D.R.G.M. 100131 for the 53rd and 170th Infantry and the 13th Dragoon Regiment. Please send photo and price to: S.S., P.O. Box 460, Fairfax, Virginia 22030.

Wanted: Mettlach Stein #3144, Elks' Club stein. Also any other old and antique Elks' Club steins and related items. Must be in mint condition. W.E.S., Box 230, Van Wert, Ohio 45891

Wanted: 4F steins in mint condition. M.D. Jahn, 4849 S. Austin Ave., Chicago, Ill. 60638

Wanted: Musterschutz and other pottery and porcelain steins in the shapes of Military and Imperial figures. I am also looking for the "Puss and Boot" pottery stein. F.L., Box 52, Midway City, Georgia 92655.

Will pay topps for Skull Stein and Satan Head, mint only, no repairs. Dennis Wilson, 1005 Churchman Ave., Veech Grove, Ind. 46107. Phone: 317-783-7161.

Mettlach: Pokal, #2036, etched, St. Hubert's Conversion (see Prosit No. 24 re Mettlach stein #2083 "The Boar Hunt"), Set \$750.00; ½ L. #2133 Etched, Dwarf, \$425.00; 1½ L. #2104 Etched, repaired, \$225.00; also several relief and p.u.g. J. W. Strand, 521 N. Marion St., Oak Park, Ill. 60302.

Rates for Stein Exchange and display advertising rates will be published in our next Prosit. Meanwhile send in your ads now for the next issue.



#### #2806 METTLACH TUREEN AND TRAY

A perfect example of the exquisite blending of the two techniques so beautifully utilized by Villeroy & Boch, viz: Cameo and Incised (etched).

The background is a solid slate green color trimmed with dark blue, with a continuous series of connected and entwined daisies. The daisies have an applied (or relief) beige colored centers with salmon pink petals. The tureen has two large 12"x5" dark blue panels which serve as the background for the cameo scenes.

One panel has a central male figure, apparently Bacchus, with a series of twin-tailed, fish scaled, half

human/half fish figures, both male and female, offering gifts of fruit and drink. Signs with names of the German cities Johannesburg and Rudesheim appear on the one panel. The opposite panel features a female central figure, apparently the Queen of the Wine, with similar little half human/half fish characters with baskets of grapes and a cornucopia filled with grapes, with signs of the German cities of Brauneburg and BernKastel.

Tureen dimensions: 36" circumference, 14" high overall including cover. Diameter bottom 8", Diameter top 8½". 8 liter capacity. Tray dimensions: 16-¾" diameter, 1-¾" high.

#### A cameo is ...

*Cameo* ( kame-o) — A gem carved in relief; esp: a small piece of sculpture on a stone (as onyx) or on a shell having layers of different colors, the figure being cut in relief in one layer and another serving as background. (Webster).

Among the most beautiful steins made by Villeroy & Boch must be counted their so-called "cameo" steins: Soft, delicate, translucent — almost transparent — white relief on pastel blue and green. Obviously copied from the 18th century work of Josiah Wedgwood, the V&B cameos differ from a Wedgwood cameo as a Cadillac differs from a VW!

(As a matter of fact, even a plain white-on-blue relief, such as #2086, shows more artisanship than a Wedgwood).

V&B cameo work, as for example the steins in the 2600 and 2700 series and the plaques in the 7000 series, must be seen to be believed — and appreciated. The finest details are visible, and the entire scene has a diaphanous appearance. Feathers thin out to the point of disappearance, lace looks so fragile that you would expect it to be caught up by the slightest wisp of wind. Whether the scene is one of Trojan warriors or of a lover's tryst, its beauty catches the eye instantly.

Oddly, V&B do not refer to this work as cameo, or "Kamee" in German. If we look at the descriptions in the "Price List" appended to Mohr's book, we see that most cameo steins are described merely by the pictured scene, with perhaps a background color described. However, the 7000 series, i.e. steins number 7005, -6, -12, etc., and plaques number 7025, -26, -30, etc., are identified by the word "*Phanolith*"!

So here we do have a description, tenuous as it may be. What does the word mean? Most likely it was coined by V&B (note its similarity to "Chromolith"); is it a play on the word "fantasy"? or is it supposed to be "glass-like"? Who knows? But a fantasy of delight these cameos are.

How were these Phanoliths made? Like other relief-ware, the decorations were first molded, cooky-like, and then were transferred to the pre-formed body of the stein or plaque (the process is known as "looting"). The craftsman then most likely added detail with a modeling tool, scraping away white clay until only a thin layer remained on the base. Upon firing, the white clay took on its translucent appearance, the thinner the section, the more translucent the appearance. Final corrections or additions of detail could then be accomplished by the use of a cutting wheel, carefully handled.

Most V&B cameo items are signed by Stahl; if anyone has discovered a different signature on a cameo item, we'd like to hear about it.

If you haven't looked at a Villeroy & Boch cameo item lately, do so now to refresh your memory and to enjoy its beauty — here is true craftsmanship and artistry: A thing of beauty and a joy forever . . .

Thanks to "The Stein Standard" Princeton N. J. for permission to reprint this article.

## Constitution and By Laws

It may seem a bit after the fact, but after lo these many years as a club we finally have a constitution and by-laws. As a result of the membership assuming the ownership of SCI, the organizing group with the help of our legal counsel, Radford Smith, have drafted the following constitution and the by-laws by which our club will operate. They are reprinted here for your information.

**ARTICLES OF ORGANIZATION  
and  
CONSTITUTION  
of  
STEIN COLLECTORS  
INTERNATIONAL**

**ARTICLE I**

The name of this Association shall be STEIN COLLECTORS INTERNATIONAL and may be abbreviated "SCI".

**ARTICLE II**

The purpose of this organization will be:

1. To promote the hobby of collecting "steins", drinking vessels and other related items.
2. To promote and encourage research and education regarding antique drinking vessels, and associated items and products and the culture and history of the people and companies who made these items and of the countries where they were manufactured.
3. To promote travel.
4. To provide a periodical newspaper and other literature to be circulated among the members of this organization.
5. To convene from time to time.
6. To exercise the powers permitted non-profit corporations under Chapter 617 of the Florida statutes; provided, however, that this Association, in exercising any one or more of such powers, shall do so in furtherance of the exempt purpose for which it has been organized as described in Section 501 (C) (3) of the Internal Revenue Code. No part of the net earnings of this Association shall inure to the benefit of any member or officer hereof, or to any private individual (except that reasonable compensation may be paid for services rendered to or for the organization affecting one or more of its purposes) and no member or officer of the Association, or any private individual shall be entitled to share directly or indirectly in the distribution of any of the Association's assets on dissolution of the Association. No part of the activities of the Association shall consist of carrying on propaganda or otherwise attempting to influence legislation, or participating in, or intervening in (including the publication or distribution of statements), and political campaign on behalf of any candidate for public office,

**ARTICLE III**

All persons interested in "steins" or other collectible drinking vessels and associated products, their history, manufacture and places of

origin, who are willing to share their knowledge with other members of the organization, shall, subject to the limitations defined in the By-Laws, be eligible to become members of this organization upon the payment of annual dues.

**ARTICLE IV**

The affairs of the organization shall be controlled by a Board of Directors, which shall consist of not less than 6 members. The directors shall be elected in the manner provided in the By-Laws of the Association.

**ARTICLE V**

The funds of the organization shall be raised by the collection of dues and otherwise as may be provided by the By-Laws, and the funds so raised, after the deduction of operating expenses, shall be used exclusively in furtherance of the purposes stated in Article II.

**ARTICLE VI**

The directors and regular officers, whose titles and duties shall be stated in the By-Laws of the organization, shall serve without pay, and no part of the funds of the Association nor any part of its net earnings shall inure to the benefit of any member of the Association or to any other individual.

**ARTICLE VII**

Upon dissolution of this organization, all of its assets remaining after payment of all costs and expenses of such dissolution shall be distributed to organizations which have qualified for exemption under Section 501 (C) (3) of the Internal Revenue Code, or to the Federal Government or to a State or local government for a public purpose, and none of the assets will be distributed to any member, officer or trustee of this organization.

**ARTICLE VIII**

This Constitution may be altered or amended either in whole or in part at any meeting of the members of the Association by the affirmative vote of not less than two-thirds of the members of the Association present at the meeting.

DONE AND APPROVED unanimously by the undersigned, who are organizers at the organizational meeting this 15th day of July, 1972. (nunc pro tunc)

**BY LAWS OF  
STEIN COLLECTORS  
INTERNATIONAL**

Section 1. (Members) All persons interested in "steins" or other collectible drinking vessels and associated products, their history, manufacture, and place of origin, who are willing to share their knowledge with other members of the organization, shall be eligible to become members of this organization upon the payment of annual dues, provided, however, that each applicant for membership must be sponsored by a member in good standing.

Section 2. (Meeting and Voting of Members) An Annual Meeting of the members of STEIN COLLECTORS INTERNATIONAL, herein known as "SCI", shall be held at the Annual Convention of this organization, at such time and place as shall be designated by the directors and regular officers of the organization for the transaction of such business as may come before the meeting. Special meetings of the members of the organization may be called upon written request of one-third (1/3) of the total membership of the organization. It is the express intent of the organizers of SCI that special meetings shall be discouraged due to the geographic disbursement of the members. Notice of all meetings shall be given at least sixty days in advance of such meeting. Publication of notice in PROSIT, the SCI periodical, shall be an adequate means of notice, providing time requirements are observed. Each qualified member of the organization shall in person, with no

proxy right, be entitled to one vote at the Annual Meeting, or any special meeting of the membership. A quorum for the purpose of conducting business at any meeting of the membership shall be a number equal to one more than one-half (1/2) the number of directors and regular officers.

Section 3. (Directors) The Board of Directors of SCI shall consist of the following persons who shall be members in good standing of this organization: the active officers, to-wit, the president, first vice president, second vice president, recording secretary and treasurer, the immediate past-president and the two presidents chronologically preceding the immediate past-president, together with six general directors, two of whom shall be elected each year. Accordingly at the 1973 annual meeting two of the directors shall be elected for three years, two for two years and two for one year, and thereafter each year two directors shall be elected for three year terms. The immediate past-president of SCI shall serve for the year following his term as president in the capacity of Chairman of the Board of Directors. In the event the immediate past-president is for any reason unable or unwilling to serve in such position, a chairman of the board may be elected by a majority vote of the directors.

Section 4. (Meeting and Voting of Directors) An Annual Meeting of the directors shall be held at the Annual Convention prior to the Annual Membership meeting. Additional special meetings of the directors may be called at any time and held at any place as shall be determined by the president, or by one-fourth (1/4) of all the directors. Notice of the time and place of directors meetings shall be given no less than fifteen days before the date of such meeting, provided, however, that this time limitation shall not apply to special directors meetings called during the Annual Convention. Actual notice or a good faith attempt to give notice to each director in attendance at an Annual Convention shall be a prerequisite to directors meetings at Annual Conventions. Each director shall be entitled to one vote with no proxy right and a majority of the board of directors personally present shall constitute a quorum for the transaction of business.

Section 5. (Duties of the Board of Directors) The board of directors shall conduct all of the general business affairs of SCI.

Section 6. (Officers and their Duties) The officers of SCI and their duties shall be as follows:

(a) President. The president of SCI shall preside at all Membership Meetings. He shall appoint regular and ad hoc committees or may appoint committee chairmen granting unto such chairmen the power to appoint members of their respective committees. He shall be an ex-officio member of all committees but should abstain from voting except for the purpose of breaking a tie.

(b) First Vice President. The first vice president shall be in charge of planning the SCI Conventions which take place at or near the conclusion of his term as first vice president. He shall be responsible for arranging the program for such convention and making all necessary arrangements both with and through the members of SCI. The first vice president shall not, however, have the power to commit the organization financially or otherwise without the approval of the president and the chairman of the board. It is the express intent of the organizers that, whenever possible, the first vice president be a resident of the area in which the convention for which he has responsibility is scheduled to take place. In the absence of the president the first vice president shall perform the duties of the president.

(c) Second Vice President. The second vice president shall assist the president and first vice president in connection with all of their duties and in the absence of the president and first vice president shall perform the duties of these

offices respectively. The place of residence of the second vice president shall not be considered a qualification for this office.

(d) Subordinate Vice Presidents. Each President of each local chapter of SCI duly authorized as an affiliate of SCI shall automatically be an officer of SCI and shall hold the title "Vice President". The vice presidents shall coordinate the affairs of their local chapters with SCI and report to the Managing Editor of PROSIT regarding activities of their chapters.

(e) Chairman of the Board. The chairman of the board shall preside at all meetings of the board of directors and shall assist in coordinating the business of SCI and in making executive decisions as set forth in these By-laws. He shall be considered an officer of SCI notwithstanding that he shall be elected by the board of directors and not pursuant to section 7 herein.

(f) Recording Secretary. The recording secretary shall keep the minutes of all of the meetings of the organization, including meetings of the board of directors.

(g) Treasurer. The treasurer shall be the custodian of all of the monies of the organization. He shall be assisted by the other officers. He shall present an annual report of the financial status of the organization to the board of directors and, upon the request of the board of directors, to the membership at each annual meeting.

(h) Managing Editor of PROSIT. The managing editor of PROSIT shall be in full charge of the organization's periodical newspaper PROSIT. He shall be responsible for collecting information, data, articles and other contributions from members of SCI and others, editing and publishing the same. He shall work in close conjunction with the officers of SCI.

(i) Associate Editors. The managing editor of PROSIT shall have the power to appoint associate editors each of whose duty it shall be to gather, compile, edit and submit to the managing editor of PROSIT, material for publication from the several local chapters affiliated with SCI and elsewhere. Associate editors shall be considered officers of this organization notwithstanding that they are appointed by the managing editor of PROSIT and not elected according to the provisions of Section 7 herein. Section 7 (Election of Officers) Prior to each convention the president will choose a nominating committee to present to the membership of SCI at the Annual Meeting a slate of officers for the following year. The nominating committee shall be composed of at least three members who should represent at least three different geographic areas. It is the intent of the organizers that not only in the selection of the members of the nominating committee, but in the selection of the officers themselves, the place of residence of the officers and the place of the convention for the following year shall be considered of high importance.

Section 8. (Amendments) These by-laws may be altered, amended or repealed, and new by-laws may be adopted at any meeting of the members of the organization by the affirmative vote of a majority of the members of the organization present at the meeting, or at any meeting of the board of directors by the affirmative vote of not less than two-thirds (2/3) of the total membership of the board.

DONE AND APPROVED unanimously by the undersigned, who are organizers at the organizational meeting this 15th day of July, 1972. (nunc pro tunc)

## Wrong number? Perhaps not

At the risk of having collectors suspect every wrong number caller as a professional thief, it is well for us to realize that the telephone has become an important tool for the experienced thief in determining when you are at home and when he will be free to do his "work".

Not just stein collectors, but stamp collectors and others have recalled, *after* thefts have occurred, that they received mysterious phone calls around the time of the theft. Some heard only heavy breathing or the click of the receiver being replaced. Unfortunately the collectors dismissed these calls as unimportant, or credited them to a caller too embarrassed or rude to apologize for making a mistake.

However, police say that it is common practice for professional thieves to check on the activities of their target. If you do not answer the phone, the burglars feel free to move in and enter the house. Therefore, it is always advisable to answer your telephone when you are at home and to arrange, if possible, for someone to stay in the house when the family is away.

These calls are frequently made in late afternoon and early evening. Some collectors have reported two or three such calls in one evening or during a weekend. If this happens to you, we suggest that you not leave your home unoccupied that evening. Further, feel free to contact police with your suspicions. They are interested in preventing crimes and may take extra efforts to check your home frequently. In some large urban areas, where several thefts had occurred and numerous collectors (stamp collectors in this case) had received "blind" calls, the police broadcast an alert to all collectors by radio and TV. It might be well for your local chapters to set up a relay call system, so that if a member has been getting blind calls and is concerned, he calls another member, who in turn calls another, etc. to alert them that professional thieves may be in the area and may be checking on several collections.

So . . . answer your telephone, do not leave your home unattended if you have received "blind calls", contact the police, call other collec-

tors. These are obvious precautions. Another is to not display your collection where it can be easily seen by passersby. In addition to the professional thieves, there is always the possibility that an amateur, or small-time thief, might be tempted by the collection. The growing number of drug abusers have sent these unfortunates into desperate activities in support of their expensive habit. They enter homes, not in search of specific collections, but willing to take anything that looks as though it might be converted to cash. They, and the professionals, as well, often look for furs and jewels while in the house.

It is unfortunate that a hobby which gives us so much pleasure demands so many precautions and worries, but perhaps these few simple steps may help insure the safety of your and other collections. We will bring you from time to time new information on methods of safeguarding your steins. Write to us with any thoughts you may have.

## Next Issue:

**The D.R.G.M.  
Stein #154927**

## Specialists groups



This bulletin is the official publication of Stein Collectors International, a non-profit organization dedicated to the study of antique beer steins and other drinking vessels. PROSIT is published quarterly. Dues for SCI and PROSIT are \$20.00 per calendar year. All correspondence relating to SCI membership and PROSIT shall be directed to: Stein Collectors International, P. O. Box 4226, St. Paul, Mn. 55116.

## How to fight the high cost of steins

Ask any collector what his biggest problem is in the pursuit of his hobby and he is very likely to say, "Inflated Prices" and then put a couple of exclamation points on it!! Prices completely removed from reality have been quoted in journals and books. Bob Mohr's recent book, for example, did stein collectors a great disservice, quoting astronomical prices for steins which in reality seldom do sell for those prices in the stein marketplace.

We have an idea that will help collectors to determine the true current market value of the steins in their collections and those they may be interested in purchasing. It will require some effort on your part, but it will result in establishing a realistic reference on stein prices.

We want you, all SCI members, to report to us the *buying* and *selling* prices on each and every item (steins, plaques, pouring pitchers — all collectibles pertinent to SCI) which passes into or from your collections. Although we would like you to identify yourselves when you send the information, it will be held in strictest confidence and would, of course, never be published.

What *will* be published, in PROSIT is a list of recently purchased or sold items, the price at which they were bought and sold, and specific identifying information and remarks on their condition which may affect the price.

In order to develop rather quickly a large and meaningful reference and catalog of market prices, we are asking you to send us the information on past transactions (say the last 6 months) as well as current ones. We realize that we are asking a great deal, but any you can send us would be most helpful.

This reporting technique is used very successfully by the American Philatelic Society in establishing the market price of stamps, and we see it as one of the great benefits of SCI

membership.

So please, begin right away. For purposes of collating and filing this data, we obviously cannot use information that is buried in a letter. Please send the information on 3" x 5" scratch pad paper, one transaction per sheet, one side only, if possible. We want the following:

- 1) Your membership number.
- 2) Date of transaction.
- 3) Purchased or sold — From or to dealer, collector, non-collector or at auction. (The price at which a dealer buys is of course, below the market value as he adds a markup for resale.)
- 4) Brief general description. If, like Mettlach, the stein has a number and mark, please indicate.

5) Notes on condition, i.e. chipped, cracked, stained, or any other defect.

6) Price paid, or at which it was sold.

For steins other than Mettlach which cannot be identified by number, give as complete a description as possible.

We are beginning to develop a series of abbreviations to describe the stein transactions in as brief a way as possible. If you have any suggestions in this area, please let us know.

However, do not wait for this to begin reporting. Do it now so that we can begin offering this valuable service to all SCI members.

There *is* something you can do about inflated stein prices. *And this is it!*



### DRINKING BOOTS

1 L. and ½ L. Unusual and charming addition to any collection of drinking vessels. The top of the boot is turned down as a flap over the boot. A full silver luster spur is held to the heel of the boot by a strap bearing this wording: "Wer Sein Stiefel nit Trinken Kan Ist Surwahr Kein Teutscher man." This expression is in dialect German rather than classical German and it translates, "He who cannot drink his boot (full) is indeed no German man". The spur is attached to the ankle strap by two crest-shaped medallions on each side of the boot. The medallion on the right side has an embossed becher in its

center; the medallion on left side has the old (prior to Mercury or Castlemark V & B trademark) crown and crest mark with the crown on top of the crest with initials V & B and letter "M" for Mettlach under the V & B trademark. The heel has embossed square nails with silver luster and the sole is nailed by round headed silver luster nails.

These boots vary in color from a khaki to a darker greenish gray with lining of beige or lighter color than outside of boot. The catalog number is #225, however not every piece has the number on the under (sole) side.